



January 2015



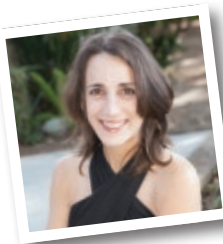
10 Tevet – 11 Sh'vat 5775



SONGS ABOUT LIFE, LOVE  
AND  
OTHER NECESSITIES



C'MON ALONG AND LISTEN TO SONGS  
OF BROADWAY AND BEYOND



**DATE** Saturday, January 31, 2015

**TIME** 8:00pm

**PLACE** Temple Ahavat Shalom

**STARRING**

Cantor Jen Roher, Cantor Patti Linsky,  
Cantorial Intern Lily Tash



**DESSERT RECEPTION FOLLOWING THE CONCERT**

To RSVP or for more information:

(818) 360-2258 • [www.TASnorthridge.org/concert](http://www.TASnorthridge.org/concert)



# MAZEL TOV TO OUR JANUARY B'NAI MITZVAH FAMILY

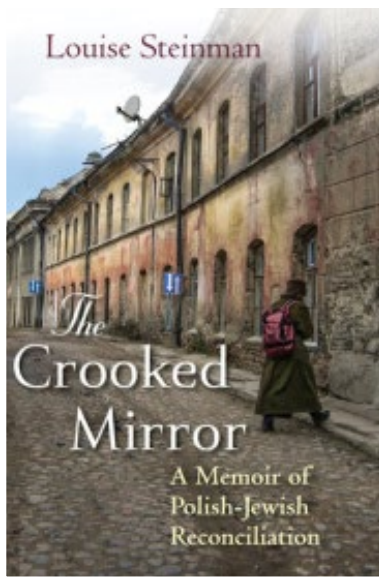
*Saturday, January 10, 2015*

Terry and Mimi Robinson and Family on the Bat Mitzvah of their daughter, Jessica Robinson



Temple  
Ahavat  
Shalom

## BOOK GROUP MEETING JANUARY 8 TO WELCOME AUTHOR LOUISE STEINMAN



On Thursday evening, January 8, the TAS Book Group will be privileged to welcome Louise Steinman, author of *The Crooked Mirror: A Memoir of Polish-Jewish Reconciliation*. In a quest to understand her heritage, the author journeyed to Poland several times and researched her family's history in the town of Radomsko, where the Jewish population had been decimated. As the

author delves deeper into Radomsko's past, she discovers a vibrant pre-war community of Jews and Catholics who lived side-by-side. Ms. Steinman uncovers untold stories of Poles who rescued their Jewish neighbors, and she

introduces these unsung heroes to us.

Book Group meetings take place in the Library/Chapel, with refreshments at 7:00 p.m. and the discussion to begin promptly at 7:30 p.m. A \$5 contribution is requested. Newcomers are always welcome.

*Phyllis & Hal Bass*



Guest Facilitator, Author Leigh Hershkovich at the December 11, 2014 Book Group Meeting



December 11, 2014 Book Group Meeting

# MEN OF TEMPLE AHAVAT SHALOM (MoTAS)

## MoTAS AS ROLE MODELS

### PRESIDENT'S MESSAGE

#### *“Enter the Young”*

A question that has long plagued MoTAS leadership is how to get younger men — dads and college-age men — involved and active. We're not alone in this; the question is regularly raised on Yammer (the URJ discussion board). It's also not just a MoTAS question; congregations are also faced with how to get young adults involved in congregational life before school draws them in.

We do have some ideas. In the Spring, we're going to initiate some activities that are good for the family. We're going to



engage with AEP at CSUN — they participated in Mitzvah Day, and we're going to invite them to the MoTAS Shabbat and other events. We're also open to your suggestions on how to get younger men involved.

We also encourage you to do your part. If you know college age men and men raising families, we encourage you to personally invite them to a MoTAS activity. Everyone benefits from the interchange.

Note: These commentaries are first posted as a featured entry on the MoTAS Website, [www.tasnorthridge-motas.org](http://www.tasnorthridge-motas.org); they are then shared in the Menorah the month after they are posted. You're invited to discuss this article at <http://wp.tasnorthridge-motas.org/2014/11/30/enter-the-young/>.

## UPCOMING ACTIVITIES

### JANUARY SPEAKER MEETING - MITCH ENGLANDER, LA CITY COUNCIL DISTRICT 12



On Sunday, January 11th, at 10 a.m., everyone is invited to join us in the Social Hall for brunch followed by our guest speaker LA City Councilman Mitch Englander from District 12, who will speak about new and on-going projects that affect Northridge.

Englander was born and raised in the San Fernando Valley. He attended valley public schools and has dedicated his life to public service and to making the Valley a safer and better place to live, work, and raise a family. He was elected to serve as Los Angeles City Councilmember for the Twelfth District on March 8, 2011. He represents the communities of Granada Hills, Northridge, Porter Ranch, Chatsworth, North Hills, Reseda, Sherwood Forest and West Hills. In July 2013, he was unanimously voted by his peers to serve as President Pro Tempore of the City Council. He serves as Chair of the Public Safety Committee, Vice-Chair of the

Budget and Finance Committee and is a member of the Planning and Land Use Management Committee.

### MOTAS DINNER AND SHABBAT - FRIDAY, JANUARY 23, 2015



On Friday, January 23rd, a special Shabbat dinner will provide the congregation with the opportunity to break bread with the Men of TAS.

... CONTINUED ON PAGE 4



The dinner, which is catered by Silver Spoons catering, starts at 6:15 p.m. and will have a Mediterranean theme. The menu is as follows: Israeli Salad w/Lemon Vinaigrette Dressing; Chicken Kabobs w/Tzatziki Sauce; Basmati Rice; Ratatouille; Pita Breads and Hummus; a Mélange of Fresh Fruit; Challah, and various beverages. The cost of the dinner is \$15 for adults and \$10 for children (\$3 higher for reservations made after 3:00 p.m. on Thursday, January 22nd or for walk-ins without reservations). Reserve your space for the dinner by calling the temple office or reserving online at <http://shabbat.tasnorthridge-motas.org/>.

Shabbat service starts at 7:30 p.m., and will feature participation by the MoTAS. In addition to the normal Shabbat service, there will be reflections by MoTAS members on how active participation in MoTAS has strengthened their relationship to the Temple. During the service, MoTAS will also be announcing the Man of the Year for 2015.

---

## FEBRUARY ACTIVITIES

Mark your calendar now for these February activities:

- On Sunday, February 8th at 8:45 a.m., our meeting will feature Hal Daum who has had a long and varied career, including working in real estate and as the Executive Director for a number of congregations. For this meeting, however, his claim to fame is that he was the student Rabbi assigned to North Valley Reform Temple in 1962 when it split from Temple Beth Torah. In 1965, NVR rejoined with Temple Beth Torah to form Temple Ahavat Shalom. Thus, Hal is essentially the first Rabbi of what became TAS.
- On Sunday, February 22nd at 6:00 p.m. will be a special Men's Only Hang Out. We'll be hanging out with Rabbi Lutz at his house, sharing dinner and discussing a variety of topics.

---

## RECENT ACTIVITIES

### DECEMBER MEMBERSHIP MEETING

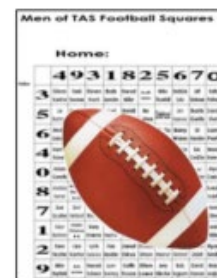
The December MoTAS Membership meeting featured the Men of TAS sharing the stories behind the Judaica they collected. The articles shared included tallit, t'fillin,

candlesticks, hanukkiyot, and prayer books from World War II.

---

## SPORTS SQUARES

The Fall Football Squares program finished in December with the last Monday Night Football game. Congratulations to all of the winners, and remember that the real winner is Temple Ahavat Shalom. Grants from the Fall Football Squares program are scheduled to be announced at the January MoTAS Speakers Meeting.



We all know that football doesn't end in December. The Superbowl will be played on Sunday, February 1st. Of course, this means that registration is now open for Superbowl Squares! This is a program similar to the existing football squares, only focusing on the Superbowl. Registration forms are available in the Temple Foyer. More information, including printable registration forms and link to on-line registration, may also be found at <http://squares.tasnorthridge-motas.org/>.

---

## FOR MORE INFORMATION

The Menorah can't contain all that MoTAS is doing. The easiest way to keep up to date with MoTAS is to read our weekly email newsletter, which is also posted on the MoTAS Website at [www.tasnorthridge-motas.org](http://www.tasnorthridge-motas.org). On the website you can find information on all our activities, sign up forms, biographies of MoTAS members, and records from MoTAS executive board meetings. We also have a Facebook group at [www.facebook.com/groups/tas.motas](http://www.facebook.com/groups/tas.motas) that you can join. The best way to learn about us, however, is to come to a MoTAS event or a TAS Shabbat, introduce yourself to anyone with a MoTAS nametag, and participate. We want to build a relationship with you.



Men of  
Temple Ahavat Shalom

# A Shabbat Celebration of



# Friday, January 23, 2015

Join Temple Ahavat Shalom as we celebrate the  
Men of Temple Ahavat Shalom (MoTAS)  
with a special dinner and service

**DINNER 6:15PM • SHABBAT SERVICE 7:30PM**

**RESERVATIONS REQUIRED FOR DINNER  
BY THURSDAY 1/22/2015**

**\*\*\* DAY OF/WALK-INS \$3 EXTRA \*\*\***

Online: <http://shabbat.tasnorthridge-motas.org/>

Telephone: Call the Temple Office at (818) 360-2258

Name: \_\_\_\_\_ Adults \$15 x \_\_\_\_\_

Address: \_\_\_\_\_ Child \$10 x \_\_\_\_\_

City, Zip: \_\_\_\_\_ TOTAL \_\_\_\_\_

Credit Card: MC V Discover \_\_\_\_\_

Exp: \_\_\_ / \_\_\_ CVV: \_\_\_ Signature: \_\_\_\_\_

**DINNER MENU**

Israeli Salad w/Lemon Vinaigrette

Chicken Kabobs w/Tzatziki Sauce

Basmati Rice

Ratatouille

Pita Breads \* Hummus

Mélange of Fresh Fruit

Challah \* Kiddush Wine \* Grape Juice

Citrus Punch \* Ice Water

**\$15 Adults \* \$10 Children**

DINNER CATERED BY

SILVER SPOONS



# ECEC



school will begin again on January 5th. It is now time to learn about winter (really!) and Martin Luther King Jr. The next Bim Bam Bimah is on Friday, January 9th and will be hosted by our Bears class. Please be sure to join us for our child friendly Shabbat service which is followed by a light snack.

If anyone has grandchildren in the school, another important date to calendar is Friday, February 13th. This will be Grandparents or Special Friends Day. You will be invited to join us to see the hard work that we do at school. We will welcome Shabbat together, sing, play and create a special project. Of course, what kind of event would it be if we did not serve you a delicious brunch?

Wishing you all a happy, healthy and peaceful new year filled with fun, laughter, family and friends.

It is hard to believe that we are now starting 2015 and that I have actually been a part of this wonderful community for half a year. It has been a very busy December. We had a wonderful turn out at the Northridge Mall, where all our children went to sing Hanukkah songs. Cantor Roher lit the first Hanukkah candle, and the children made us all beam with joy as they sang so proudly.

L'Shalom,

***Tessa Cramer,  
ECEC Director***

Our Food Truck event on Tuesday, December 16th was another great success. We had hot dogs, paninis and empanadas, and the rain actually held off so that our clergy were able to light the large outdoor Hanukkiah. Once again our children entertained everyone with a medley of Hanukkah songs.

In the ECEC the whole school gathered during Hanukkah to light the candles daily and sing and dance. Parents came in to school to help us all make latkes. What a wonderful smell permeates through the entire building during these special days!

Winter camp was great fun. Painting, cooking, games and friends kept the children busy throughout the break. Regular



# SPOTLIGHT ON SISTERHOOD

## PROGRAMMING

Our Hanukkah Meeting was a lot of fun. We had some wonderful goodies to try with much thanks to our Sisterhood latke makers. Thank you to everyone who brought gifts for our synagogue program of giving gifts to those in need.



Want to know “Who’s in your family tree?” Join us January 15, 2015 at 7:00 p.m. For information Jewish Geography/Jewish Genealogy: Exploring Your Jewish Roots by Pamela Weisberger (Jewish Genealogical Society of Los Angeles).

Free for Sisterhood members, \$5 for non-members. For more information call Jackie Zev at (818) 832-9099 or [tas.jackiez@gmail.com](mailto:tas.jackiez@gmail.com).

## SAVE THE DATE

**Thursday, February 19, 2015**, 7:00 pm, John Paul Thornton – Jewish Artist(s)

**Thursday, March 19, 2015**, 6:00 pm, TAS Sisterhood Seder, Jews in the Far East – Space is Limited

## WAYS AND MEANS

Attention Mah Jongg Players: We are once again selling cards for 2015. Please support our Sisterhood by ordering your cards through us. You get all of the same benefits as if you ordered them directly, and they will be mailed to you.



If you have any questions about our fundraiser, please contact Robyn Blachman at [blachmanj@yahoo.com](mailto:blachmanj@yahoo.com).

## WEDNESDAY NIGHT MAH JONGG



Don’t miss out on our monthly Mah Jongg games. We play on the fourth Wednesday of every month at 6:15 p.m. at the Temple. We always have a teacher there to give lessons, but you can’t learn

if you don’t show up! Every level of play is accommodated. Don’t miss out. There is a \$5 donation to play. Contact Anita Hoch for more information [anitapearl47@gmail.com](mailto:anitapearl47@gmail.com).

## EDUCATION



Did you have a child who attended a Jewish camp, or went on a trip to Israel this past year? Did you know that every year our Sisterhood and the Men of TAS give camperships to help support these activities? All you have to do is download the application off the TAS website and follow the directions. Your child will need to do some volunteer hours prior to the due date, so download the application now so you will be able to plan accordingly. Giving your child the experience of Jewish camp has been proven one of the best ways to ensure that they continue to live a Jewish life into adulthood, and we are here to support your efforts. If you have any question contact Roseanna Sculler at [rsculler@aol.com](mailto:rsculler@aol.com), (818) 886-7320 or Eileen Roseman at [scoobydoodle1@mac.com](mailto:scoobydoodle1@mac.com), (818) 807-3917 Education Co-Vice Presidents.

## CELEBRATE A SIMCHA



Do you want to honor a special birthday, anniversary, baby naming or an auf ruf? How about honoring a special

someone or accomplishment? Has someone in your family recently graduated, retired, or would you like to honor the memory of a loved one? You can honor someone by becoming a co-sponsor at a Friday Night Oneg? For a \$125 donation to TAS Sisterhood, your name and the reason for the simcha will be included in the Shabbat Shalom pamphlet. Contact Cindy Spoon in the Temple office at (818) 360-2258 if you have any questions.

## COUPONS FOR MILITARY FAMILIES

TAS Sisterhood is pleased to announce that this month we were able to send two boxes of coupons to overseas bases. The coupons went to Japan, to the Air Force/Marine Unit and to the Navy. The families appreciate the coupons, as prices are very high overseas.

Thank you for cutting and sorting your coupons. They should be sorted into envelopes and labeled “FOOD” and “NOT

... CONTINUED ON PAGE 8



FOOD” This makes it more convenient for the recipients to find what they need.

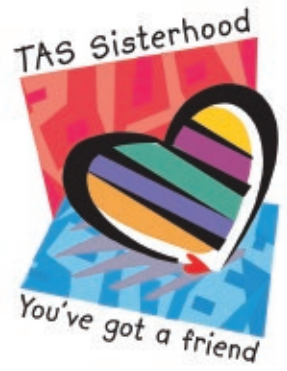
The boxes sent are the very largest Flat Rate. These go to an APO, therefore we pay domestic postage. The boxes are stuffed as full as possible, and several pounds of coupons make their way to those who need them.

While they do accept expired coupons, all coupons must be cut. Sheets of uncut coupons cannot be sent out and will



be recycled. Volunteers who can cut coupons are welcome. If you have any questions or would like to volunteer to cut coupons, please call Mel Birken at (818) 366-2397.

*Sue Sculler*  
*Temple Ahavat Shalom Sisterhood*  
*President*



# JQSA

## VALLEY JEWISH QUEER STRAIGHT ALLIANCE

A new safe trans-denominational space for lesbian, gay, bisexual, transgender, queer, questioning and straight ally (LGBTQA) Jewish teens age 14-18.

**WHAT YOU'LL GET FROM THE PROGRAM:**

- Monthly meetings with awesome free dinners and discussion
- Two one-day retreats at Shalom Institute
- Dynamic speakers from the LGBTQA and Jewish communities
- A place to meet teen LGBTQA and straight allies
- A meaningful Jewish experience

**WHAT YOU'LL GIVE BACK TO THE COMMUNITY :**

- An understanding of what it means to be a good ally
- A wider Jewish perspective to share with others
- Leadership and activism skills to take back to your high schools or use in college
- The skills to become an activist for greater inclusion inside and outside of the Jewish community

### UPCOMING MEETINGS

Kosher-style meals provided, please contact for other requests.

**TEMPLE KOL TIKVAH - SUNDAYS 6:30PM-8:30PM**  
20400 Ventura Blvd., Woodland Hills, CA 91364

November 16th • December 14th • January 25th  
February 22nd • March 22nd • April 19th  
May 3rd • June 7th

**SHALOM INSTITUTE - SUNDAY ONE DAY RETREATS**  
34342 Mullolland Hwy, Malibu CA, 90265

February 8th • May 16th

Generously supported by

Find Valley JQSA on [Facebook](#) and [Twitter](#). Contact us at [valleyjqsa@gmail.com](mailto:valleyjqsa@gmail.com)



# TAS SUNDAYS OF SERVICE

## ANOTHER FRUITFUL AND FUN SUNDAY



What a gorgeous day it was for our December afternoon of gleaning grapefruit and oranges! And what a productive harvest we had – for a total of 35 boxes and nearly 1,600 pounds of fruit! Our continued partnership with Food Forward has proven quite fruitful in our effort to combat hunger in Southern California. We were able to designate our social action partner, SOVA, to receive 100% of this fresh fruit to support its food pantries serving the needy throughout Los Angeles and the San Fernando Valley.

Our public-private event included a wonderful mix of volunteers: seven from TAS' Sundays of Service group, and seven new volunteers from Food Forward's website. The synergy and esprit de corps amongst the group led to another successful afternoon harvest.

We want to extend a "fruitastic" thanks to the following volunteers for their time, energy, and enthusiasm, as well as their dedication to Food Forward's community service efforts:

**Alyce Caskey**  
**Ben & Cindy Tenn**  
**Efrat & Ben Yakobi**  
**Jordan Davidovitz**  
**Sandy, Claire & Paige Epstein**  
**Evgenia L**  
**Alex & Chi Ngo**



Our next fruit pick is scheduled in April and will be co-sponsored by Men of TAS. Everyone is welcome to join in the fun!

All our best,

*Shellie & Ethan Turer*  
*Your Food Forward Pick Leader Team*  
*TAS Sundays of Service*

## SOS AND SOVA - PARTNERS IN SERVICE

Join TAS SOS for another Sundays of Service volunteer event with our social action partner SOVA – a nonsectarian program of Jewish Family Service of Los Angeles – dedicated to alleviating hunger and poverty in the community through food distribution. Our dedicated helpers will support this wonderful charity by sorting and packaging food to serve the needy in the San Fernando Valley.

**WHAT:** Help SOVA alleviate hunger in our community

**WHERE:** SOVA – Valley Food Pantry  
6605 Odessa Avenue, Van Nuys  
[between Vanowen and Victory – parking lot in back]

**WHY:** To Give of Ourselves to Others in Need

**WHEN:** Sunday, February 8th  
10:00 a.m. - 12:00 p.m.

**HOW:** Register in advance – Space is limited to 10 volunteers  
\*\* Please wear closed-toe shoes \*\*

**RSVP:** to Shellie Turer at (818) 993-2255 or sign up by e-mail at: [PetsRPeopleToo@att.net](mailto:PetsRPeopleToo@att.net)



... CONTINUED ON PAGE 10

## SOS & FRONTLINE FOUNDATION - SHARING SWEETNESS

Join TAS SOS this month as we continue to support our friend and community leader, **Ray Castellani, Founder of Frontline Foundation**. Ray's non-profit organization was **formed in 1987** and serves emergency meals to people on Skid Row. **In 1995**, Ray was awarded the **Presidential Citizens Medal** by President Bill Clinton for "perform[ing] exemplary deeds or services for his or her country or fellow citizens." **On May 13, 2012** – 25 years after Ray's first meal giveaway – he served his **millionth sandwich** to the hungry. Let's help Ray as he continues his life's work...

**WHAT:** Help sort ~5,000 pounds of candy – from the collection drives of the Annual Candy Split and Mitzvah Day – to share some "sweet"ness with others less fortunate

**WHERE:** Ray's Home in Granada Hills  
17539 Lahey Street  
[between White Oak and Louise Avenues  
~1 mile from TAS]

**WHY:** To Give of Ourselves to Others in Need

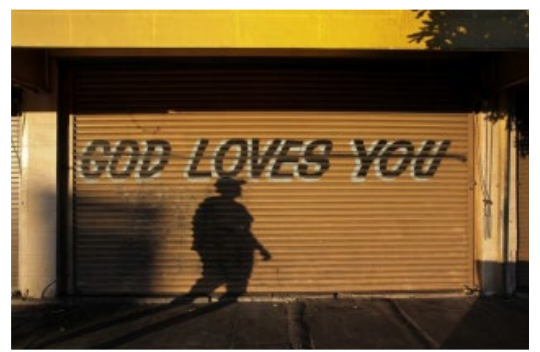
**WHEN:** Sunday, January 25th from 1:00 – 3:00 p.m.

**HOW:** Register in advance – Space is limited to **10 volunteers**; Families and children accompanied by adults are welcome!

**RSVP:** to Shellie Turer at **(818) 993-2255** or sign up by e-mail at: **PetsRPeopleToo@att.net**

*"Be a beacon of hope for the human race, let your lives be an example for those to follow and let your love for each other spill over for the betterment of humanity."*

*~ Raymond Castellani, Frontline Foundation*



## ROSH CHODESH HANUKKAH GROUP MEETING



Left to Right:  
Barbara Seltzer, Fran Lapidés, Hildie Gold, Becky Breuer, Marge Dallis, Lynda Spector, Alyce Schultz-Rozsa,  
Elaine Pfefferman, Ronnie Gelernter, Eunice Horowitz, Janet Rosen and Rochelle Skolnick

Seated in Front from Left to Right: Andy Mann and Sheila Reback





# TAS SISTERHOOD SEDER

THURSDAY, March 19, 2015 at 6:00 PM  
TAS Social Hall



Please join Sisterhood, Rabbi Shawna Brynjegard-Bialik, Cantor Jen Roher, Cantor Emerita Patti Linsky and Cantorial Intern Lili Tash for our Annual Women's Seder

We will celebrate the story of Jews in the Far East, taking the words of the Haggadah to heart, as if we ourselves were in Jerusalem, Egypt or Persia, traveling on the Silk Road and settling on the banks of the Yellow River & China Sea.

Moms, sisters, daughters, friends all welcome.

**PAID reservations are required. Tickets will NOT be sold at the door.** Please fill out form below and send with your check, made out to : TAS Sisterhood, to Rhonda Mayer; 10350 Larwin Ave; Chatsworth, CA 91311 by Thursday March 12. **SPACE IS LIMITED.** Plan ahead so you can be a part of our tradition. For more information please call Rhonda Mayer at 818.448.1040.



----- cut here -----

Name: \_\_\_\_\_ Phone: \_\_\_\_\_ Email \_\_\_\_\_

	# attending	Cost per person	Total cost
Sisterhood Member		\$36	\$
Guests		\$42	\$
<b>TOTAL</b>			<b>\$</b>

Please write the name of each guest:





# What does well-being look like?

It's the perfect blend of comfort, convenience and a personalized approach to care. From basic daily assistance to more specialized care tailored to meet your needs, you'll find the spacious two bedroom residences to be the perfect fit. Come see how rewarding and reassuring life can be at The Village at NorthRidge.

**The VILLAGE**  
AT NORTHRIDGE

**Independent & Assisted Living  
Senior Residences**

9222 Corbin Avenue, Northridge

**[TheVillageAtNorthRidge.com](http://TheVillageAtNorthRidge.com)**

**818.732.6974**



AN **SRG** SENIOR  
LIVING COMMUNITY



RCFE #197607888



## GENEROUS GIFTS

### ANNUAL GIVING/ GENERAL FUND

Deborah Weissman  
Sheila Reback

### CARING COMMUNITY FUND

Lynn and Michael Doner  
Joseph and Robyn Blachman  
Phyllis and Hal Bass in honor of the birth of Abbey Klein's granddaughter, Rose Elizabeth Sikes  
Abbey Klein in honor of the birth of Rose Elizabeth Sikes, daughter of Lindsey and David Sikes

### MARISA INGRUM FUND-RESILIENCE OF THE SOUL

The Shearer Family in memory of Rose Direnfeld

### SARITZKY FAMILY ADULT EDUCATION FUND

Abbey Klein, "Mazel Tov" to Jaryn Saritzky and Family on her passing the California Bar

### SOCIAL ACTION FUND

Dorri and Bernard Raskin  
Marianne Garrity to Fran Rosenfield's Gifts From The Heart to Len Rosenfield, Jeffrey Rosenfield and Shari and Bill Guilfoyle, in memory of Fran Rosenfield  
Leslie and Tyree Wieder to Fran Rosenfield's Gifts From The Heart  
Shari and Bill Guilfoyle to Fran Rosenfield's Gifts From The Heart in Memory of Fran Rosenfield

### A SPECIAL THANKS TO ALL THOSE WHO PARTICIPATED IN OUR 2014 YEAR END APPEAL (as of December 24, 2014)

Phyllis and Hal Bass, Kathryn and Ken Bernstein, Phyllis and Bill Bigelson, Mel and Les Birken, Carol Bizar-Morton, Robyn and Joe Blachman, Loretta and Jerold Bloom, Marilyn and Anastasia Burman, Myrna and Bryan Davis, Marcy and Jerry Hilecher, Dori and Larry Hoffman, Eunice Horwitz, Angela and Stephen Hyam, Karen Jaye, Gail Karlin, Marcie and Mikolaj Kazimirowicz, Helene and Fred Kimmel, Abbey Klein, Pamela and David Kramer, Arlene and Thomas Krausz, Jenna Krell, Wendy and Barry Krowne, Lisa and Aaron Labowitz, Heidi and Scott Lauer, Gale and Harvey Lawson, Diane Levine, Joel Lowell and Terri Jonisch, Laraine and Howard Miller, Briget and Mark Miller, Sheila Reback, Mimi and Terry Robinson, Mindy and Robert Rose, Brian Sanders, Jo and Jim Schwartz, Sue and Jay Sculler, Judy and Richard Seligman, Ava and Paul Silver, Anne and Gerald Stein, Joanne Tilner, Danielle Wank and Nadim Said

---

## Yahrzeits

Cathy Meyers in memory of Bertha Meyers  
Pam and Bruce Miller in memory of Max Miller  
Sue Miller and Daryn Pakcyk in memory of Louis Rubin  
Ellen Turner and Lillian Blum in memory of Jerry Blum  
Anita and Steven Hoch in memory of Rose Schwarz  
Sherry and Ira Kaplan in memory of Billie Joan Bronson  
Ruth and Max Lupul in memory of Esther Abramovitch  
Tammy Kent in memory of Larry Lichtenstein  
Alan and Melissa Kassan in memory of Shirley Koran  
Shirlee Kline in memory of Henry Robert Kline  
Kathleen Barker in memory of Olga Englova  
Susan Cohen in memory of Esna Cohen  
Maria Tsimanis in memory of Gary Tsimanis  
Gail Karlin in memory of Sam Karlin  
Gail Karlin in memory of Betty Maiman  
Debbie and Scott Weiss in memory of Shirley Srery  
The Brynjegard-Bialik Family in memory of Louis Rubin  
Elliott and Joyce Edelson in memory of Harry Edelson

Terry and Bruce Hatkoff in memory of Louis Smith  
Marjorie Dallis in memory of Jennie Dallis  
Anita and Steven Hoch in memory of Suzy Lowinger  
Howard and Laraine Miller in memory of Ernestine Miller

*Thank you all for your generous donations!*



# Video Services Un-Limited



Keeping your memories special for a Lifetime

*"Remember, You can't hear it or relive it in a Photograph."*



Visit us at our website [www.videoyou.com](http://www.videoyou.com)  
or Visit our studio



Weddings

10727 White Oak Ave. Suite 101  
Granada Hills, CA 91344  
818-727-7746

We convert your old videos to DVD



Bar/Bat Mitzvahs

## MOUNT SINAI MEMORIAL PARKS AND MORTUARIES

YOUR FAMILY, YOUR MEMORIES,  
YOUR TREASURES.

*Keep them together with our complimentary  
Family Planner and Guide. Contact me for your Guide to help you  
plan ahead, a gift of love for your family.*

**Doreen Kayne**

Temple Ahavat Shalom's  
Personal Advance Planning Representative  
(866) 813-8100, Ext. 413

[dkayne@mountsinaiparks.org](mailto:dkayne@mountsinaiparks.org)



Hollywood Hills FD-1010 ♦ Simi Valley FD-1745  
(800) 600-0076 ♦ [www.mountsinaiparks.org](http://www.mountsinaiparks.org)

*Dedicated to the entire Jewish community as a service of Sinai Temple of Los Angeles*



## Condolences

Robyn Kaplan and Scott Lauer and Families on the death of their great aunt, Kay "Katie" Padovano

Berri Winnick and Zak Winnick and Family on the death of Terry Winnick

Brian Reback and Family on the death of his father, Louis J. Reback

Jan Saltsman and Family on the death of her father, Lee Appel

Sue Issler and Family on the death of her mother, Kitty Esquenazi

Debra Hirsch and Family on the death of her husband and our congregant, David Hirsch

*May their memory be a blessing*



## Congratulations to:

Abbey Klein is the proud grandmother of, Rose Elizabeth Sikes  
The proud parents are Lindsey and David Sikes

Jennifer and Robert Spier are the proud parents of, Miriam Rose Spier



### TEMPLE AHAVAT SHALOM/HILLSIDE MEMORIAL PARK AND MORTUARY PRE-NEED PARTNERSHIP PROGRAM

Taking time to plan for the future so that no unexpected costs arise during a time of loss is the greatest gift you can give your loved ones. Our thoughtful PRE-NEED PARTNERSHIP PROGRAM enables you to make all the arrangements in advance. Give your family peace of mind, knowing that you have made the right decision.

Temple Ahavat Shalom members will receive a Pre-Need Partnership Program savings on selected properties and special financing. In addition, each purchase will generate a \$500 per space donation to Temple Ahavat Shalom from Hillside. This program is offered to better serve the Jewish Community and to provide additional support for the temple.

For more information call:

**Fran Krimston**

Family Advisor and Liaison to Temple Ahavat Shalom

310.641.0707 x 272

[fran@hillsidememorial.org](mailto:fran@hillsidememorial.org)



**HILLSIDE** ★

MEMORIAL PARK AND MORTUARY

A TRADITION OF KEEPING FAMILIES TOGETHER

6001 W CENTINELA AVENUE  
LOS ANGELES, CA 90045  
310.641.0707 OR 800.576.1994  
[HILLSIDEMEMORIAL.ORG](http://HILLSIDEMEMORIAL.ORG)

FD 1358

# JANUARY 2015 AT TEMPLE AHAVAT SHALOM

Sunday	Monday	Tuesday	Wednesday	Thursday	Friday	Saturday
				<b>1</b> Temple Offices and School Closed	<b>2</b> 6:45pm - Lay-led Torah Study 7:30pm - Erev Shabbat Service	<b>3</b>
<b>4</b> No Religious School	<b>5</b>	<b>6</b> No Torah Study/No Dalet/ TAS High 6:00pm - Sr. TASTY Laser Tag Event 6:00pm - Sisterhood Board Meeting	<b>7</b> No Hebrew School 7:15pm - JNET Meeting	<b>8</b> 10:00am - Melton Class 4:00pm - Adult Intermediate Hebrew 7:00pm - Book Group Meeting	<b>9</b> 5:30pm - ECEC Bim Bam Bimah 7:30pm - Erev Shabbat Service	<b>10</b> 9:00am - Shabbat Morning Yoga with Rik Vig 10:30am - Chapel Minyan 4:45pm - Bat Mitzvah of Jessica Robinson
<b>11</b> 8:45am - Men of TAS Meeting 9:00am - Adult Hebrew	<b>12</b> 10:00am - Adult Judaica Art Class	<b>13</b> 9:30am - Torah Study 6:30pm - Marketing Committee Meeting	<b>14</b>	<b>15</b> 10:00am - Melton Class 4:00pm - Adult Intermediate Hebrew 7:00pm - Sisterhood Meeting 7:00pm - Membership Committee Meeting 7:30pm - Religious School Parent Board Meeting	<b>16</b> 6:00pm - Community Shabbat Dinner (Dalet) 7:00pm - Erev Shabbat Early Service 8:30pm - Lay-led Torah Study	<b>17</b>
<b>18</b> No Religious School	<b>19</b> Temple Offices and School Closed	<b>20</b> 9:30am - Torah Study Group 6:00pm - TAS Tuesdays	<b>21</b> 5:45pm - Mid-Year Calendaring Meeting 7:15pm - TAS Board Meeting	<b>22</b> 10:00am - Melton Class 4:00pm - Adult Intermediate Hebrew 7:00pm - Budget and Finance Committee Meeting 7:00pm - Social Action Committee Meeting - Away	<b>23</b> 6:30pm - Community Shabbat Dinner (MoTAS) 7:30pm - Erev Shabbat Service featuring the Men of TAS	<b>24</b> 9:00am - Shabbaton 5:00pm - ECEC Movie/Pizza Fundraiser - Away 6:00pm - Club 45 Bowling - Away
<b>25</b> 9:00am - Adult Hebrew	<b>26</b> 10:00am - Adult Judaica Art Class	<b>27</b> 9:30am - Torah Study	<b>28</b> 6:15pm - Sisterhood Monthly Mah Jongg	<b>29</b> 10:00am - Melton Class 4:00pm - Adult Intermediate Hebrew	<b>30</b> 7:30pm - Erev Shabbat Service	<b>31</b> 7:30pm - Jr. TASTY Roller Skating Event - Away 8:00pm - Cantor's Concert - Songs About Life, Love And Other Necessities

## The Menorah is . . .

Published monthly by Temple Ahavat Shalom,

18200 Rinaldi Place  
Northridge, CA 91326

Editor - Fran Krimston  
818-363-1969-eve / 310-641-0707-day  
fran@hillside Memorial.org

Proofreader - Helene Kimmel  
Proofreader - Leanne Lansang

Deadlines are the 15th of the preceding month.

MENORAH REACHES MORE THAN  
1,500 ADULTS EVERY MONTH.

PLACE YOUR AD  
IN THE NEXT MENORAH!

Rates are: \$200 for a full page  
\$100 for a half page  
\$50 for a quarter page

Pay for a full year and get one month free.

Distribution is: 1,500 email, full color

Email Aaron Solomon for information  
at: asolomon@TASnorthridge.org