



Renew Your Spirit

HIGH HOLY DAYS OFFERINGS

The High Holy Days offer us the opportunity to reflect upon and renew the journey of our lives. We are delighted to offer worship and study opportunities designed to meet the needs of the many members of our community. Our worship schedule, and study opportunities will bring added meaning and significance to your High Holy Days experience. Life is all about the choices we make and how we act and behave in the world around us. Judaism asks us to spend the month of Elul (the month before Rosh Hashanah) reflecting on the actions and choices we have made in the past year. Elul also offers us a chance to make concrete changes for the better, to begin to take the actions that will help shape who we will be in the new year. May you be written and inscribed for a year of blessing and peace.

Rabbi Barry M. Lutz, R.J.E.

S'LICHOT - PREPARE TO RENEW

Saturday, September 24, 2016

S'litchot continues our transformative journey. Individuals and families are invited to join us for this powerful evening of reflection.

Havdalah and S'litchot Service	Dessert and Discussion Groups
7:00 p.m.	8:15 p.m.

EREV ROSH HASHANAH

Sunday, October 2, 2016

Family Service	Main Service
6:00 p.m.	7:45 p.m.
Sanctuary	Sanctuary

ROSH HASHANAH

Monday, October 3, 2016

Family Service	Main Service	Youth Service
8:30 a.m.	10:30 a.m.	10:30 a.m.
Sanctuary	Sanctuary	School Building

ADULT LEARNING AND TASHLICH

Tuesday, October 4, 2016

6:00 p.m. Wine & Cheese
6:30 p.m. Tashlich Study and Service

SHABBAT SHUVAH

Friday, October 7, 2016 - 7:30 p.m.

The Shabbat of Return offers the opportunity to celebrate Shabbat while continuing along the path of reflection and repentance that we travel during the Ten Days of Repentance.

KOL NIDRE

Tuesday, October 11, 2016

Family Service	Main Service
6:00 p.m.	7:45 p.m.
Sanctuary	Sanctuary

YOM KIPPUR

Wednesday, October 12, 2016

Adult Study Sessions: 1:15 - 3:30 p.m.

Family Service	Main Service	Youth Service
8:30 a.m.	10:30 a.m.	10:30 a.m.
Sanctuary	Sanctuary	School Building

Come learn from and with members of the TAS community between morning and afternoon services at sessions designed to inform, challenge and inspire.

Yom Kippur - Afternoon (all ticket holders)

Afternoon	Yizkor	Neilah
3:45 p.m.	5:15 p.m.	6:15 p.m.
Sanctuary	Sanctuary	Sanctuary

THE CELEBRATION CONTINUES

Shabbat of Sukkot
Friday, October 21, 2016

Sukkot and Simchat Torah Celebration
Sunday, October 23, 2016

Yizkor
Monday, October 24, 2016

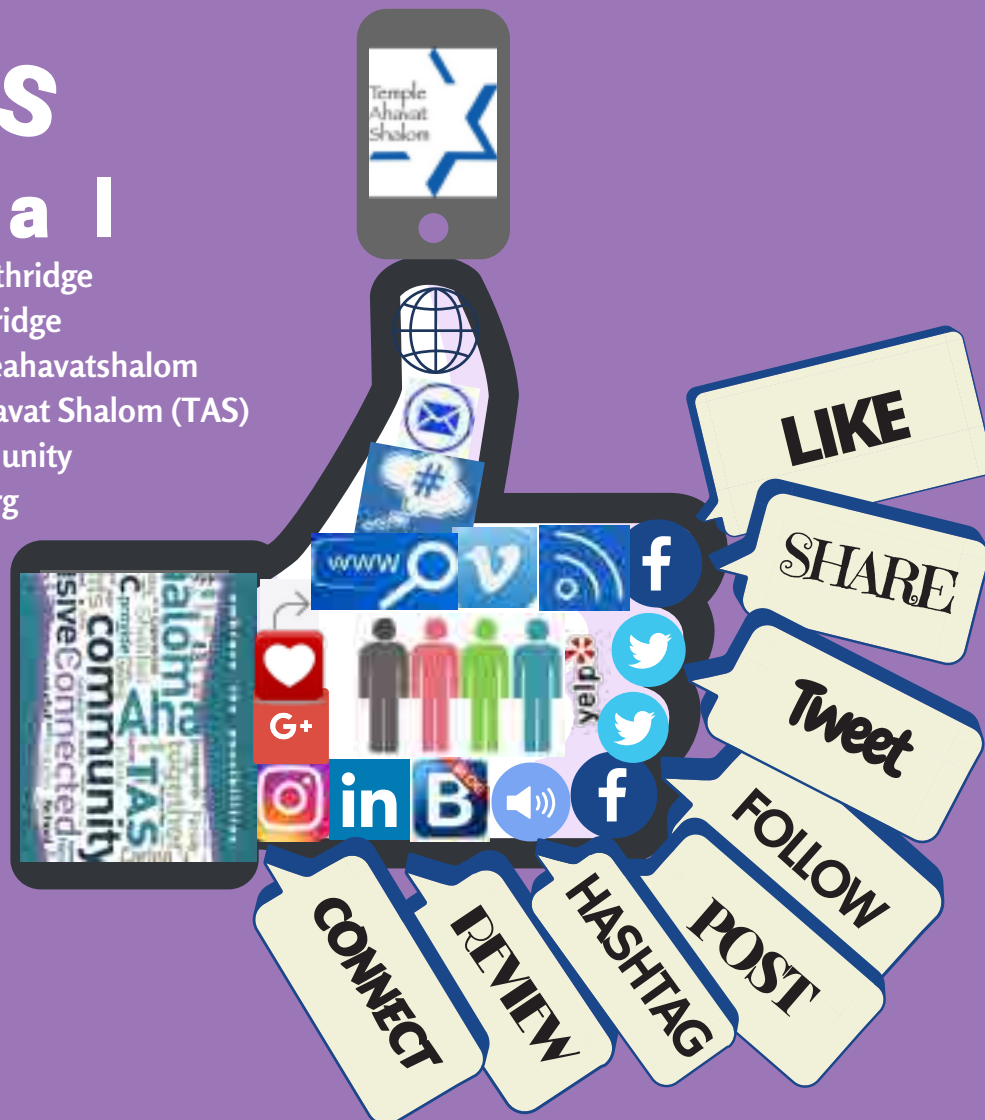
Join us as we renew our cycle of Torah learning.

4:00 pm Religious School and Adult Learning 5:00 pm Consecration and Simchat Torah Service followed by Dessert

TAS

we are
social

FACEBOOK @TASnorthridge
TWITTER @TASnorthridge
INSTAGRAM @templeahavatshalom
LINKEDIN Temple Ahavat Shalom (TAS)
#TASnorthridgecommunity
www.TASnorthridge.org



Temple Ahavat Shalom | 18200 Rinaldi Place | Northridge | CA | 91326 | (818) 360-2258

©Bonnie Covelli 2016

ACCESS THE MEMBER SECTION OF THE TAS WEBSITE



Just a reminder to our members. We have a Members Only section available. To access you simply go to the main page of our website, www.TASnorthridge.org, click on the Members Login button in the upper right corner of the home page.

You then need to click the Accept link. Then enter your login and password. You can change your password at anytime once you login. Don't remember your login or password? No worries, contact the Temple office and we will provide it for you.

Once logged in you can check and update any personal information. The only items not available to change are yahrzeits, please contact the Temple office to update. You can also register your children for Religious School online.

Additionally, a full directory of our membership is accessible once you have logged in.

BACK TO SCHOOL



TAS PARTNERING WITH JEWISH FAMILY SERVICE AND MEND TOOLS FOR SCHOOLS

This year when shopping for school supplies for your kids, please think of those children and families who cannot afford to buy basic school supplies.

Just buy a few extra items from the list below and deposit them in one of the barrels marked "Tools for Schools".

You will get an early start on Mitzvah Day, and help children, living on the fringe or below the poverty level, to feel ready to learn and be prepared, motivated and proud to attend school. Over 3,000 children are helped through generous donations. Distribution is through SOVA three domestic violence shelters sponsored by JFS and MEND.

EVERYTHING'S ON SALE NOW!

**THANKS TO EVERY FOR YOUR GENEROSITY
MONETARY DONATIONS ALSO WELCOME**

Social Action: Judy Stehr, co-chair
(818) 744-6227 or jesterjudy@gmail.com

ITEMS REQUESTED FOR DONATION:

Pens (red and blue)
Pencils (wooden and mechanical)
Crayons (24 count)
Colored pencils
Markers
Loose leaf paper
Spiral notebooks

3 ring binders - large
Pocket folders
Glue Sticks
Rulers
Scissors
New and Gently Used (clean) Backpacks

FRANKLY SPEAKING

Dear Friends,

Life at TAS has been busily humming all summer long. We are focused on building connections, beefing up our committees, working toward an automated volunteer system, creating a robust Membership drive, reaching out to our community partners and building on the wonderful work done by those who came before us.

Connected by our individual passions, goals and life stages, we offer numerous ways to create community. We welcome and encourage your participation and offer a rich and diverse array of activities, education, social activities and paths to deepen your spirituality. And, this is the year of connecting to our North Valley Jewish community.

We are thrilled to be working with Temple Ramat Zion on a joint Purim Carnival and a beautiful Shabbat Shira service. The Cantors Concert scheduled for Saturday, March 18th will include Cantor Daniel Friedman from TRZ, as well as other guests and our choirs.

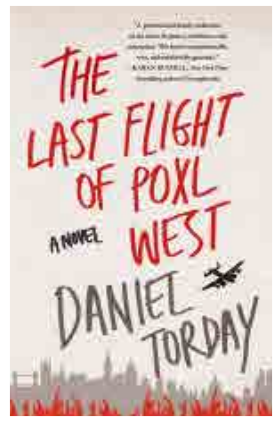
And here we are, once again, in those days leading up to Rosh Hashanah and Yom Kippur. This time offers us, not only the opportunity to reflect on the past year, but the chance to look forward to the possibilities of the year to come. I hope these days of Elul will provide you with time for deep reflection to ready your soul for the days of awe.

B'shalom,
Fran Krimston



THE LAST FLIGHT OF POXL WEST BY DANIEL TORDAY. FACILITATOR ALLAN KATCHER

Eli Goldstein has a hero, his uncle Poxl West, a rather fabulous figure who also introduced him to art, music and Shakespeare. Uncle Poxl became Eli's mentor and first demonstrable Jewish hero. Pool has published his memoirs, *Skylock*, which recounts his daring episodes as a brave war hero in WWII. As his novel takes him on the road, he moves out of Eli's life, so Eli becomes fixated on his uncle and delves into the stories in the memoir. But Eli begins to learn facts about his uncle's life he had not expected. He finds a life that is filled with unimaginable loss, and now Eli must confront a new vision of his uncle. He has to face irreconcilable facts about the war



he's romanticized and the vision of the man he's held so dear.

This novel is beautifully written and weaves together the two voices of Eli and Poxl. We learn what it really means to be a hero and to be a family during war. Torday has been acclaimed as a consummate storyteller.

The Book Group meets in the Library/Rothenberg Chapel on the second Thursday of the month. Refreshments are available at 7:00 p.m. and the discussion begins at 7:30 p.m. A \$5 contribution per person is requested. Feel free to join the group even if you have not read the book.

MEND - MEETING EACH NEED WITH DIGNITY!

MEND - Our Social Action Partner in Pacoima, provides almost 300 showers per year to homeless men and women in the East San Fernando Valley – Tuesdays are Shower Days not only during the dog days of summer, but all year 'round. These people without homes have no other access to bathing facilities. They are also provided food for 3 to 4 days from MEND's food pantry and clothing.

Please help our most needy valley residents by donating:

- Clean New and gently used T-Shirts
- Boxer shorts – all sizes including xxxL
- Towels and wash cloths

Our Homeless Shower Drive runs from August 15th through September 11th.

A great time to bring your donations is at our end of the summer Shabbabque on August 19th.

Blue Collection Barrels are located outside the School Office and in the Main Lobby.

Any questions or possible cash donations – please contact – Judy Stehr – (818) 744-6227
Email – jesterjudy@gmail.com

Thank you for doing a Mizvah for yourself (cleaning out your towel and T-shirt collection) and for our community.



**WE WOULD LOVE TO STAY
IN TOUCH WITH YOUR
ADULT KIDS AND RECENT
GRADUATES. SEND US THEIR
EMAIL ADDRESS, AND WE WILL
SEND THEM THE LINK TO THE
MENORAH EACH MONTH.**
The Editor

CHECK OUT OUR NEW LOOK!
We are so grateful to Quicksilver Printing
& Graphics for their design expertise!

Celebrate At TAS!!!

Check out our new Venue!

LIVE
DJ



TEMPLE AHAVAT
SHALOM
presents

CHAI ON Shabbat

YOU'RE
THE
STAR!

FRIDAY, SEPTEMBER 16TH

6:30 SHABBAT SERVICES

7:30 CHAI ON SHABBAT PARTY!!!

SPECIAL GUESTS

REAL GENIUS
ENTERTAINMENT
(818)346-3482

--DB--
CREATIVITY
(818)565-6833

CORNUCOPIA
CATERERS
(818)909-0075

A LIVE PARTY!!! WITH CHANCES TO WIN!!!

PRIZES & VENDOR DISCOUNTS FOR YOUR UPCOMING EVENT!

COME JOIN THE FUN! IT'S FREE!!!

PRE-REGISTER/ RSVP BY EMAIL OR PHONE

info@TASnorthridge.org (818)360-2258

DJs | Dancers | PhotoBooth | Games | Prizes | Ideas

TEMPLE AHAVAT SHALOM 18200 RINALDI PLACE, NORTHRIDGE, CA



*Men of TAS & TAS Sisterhood
present*



**Saturday Evening, October 29, 2016 at 8:00 PM
Temple Ahavat Shalom, Northridge**

Dessert reception following the concert

Tickets On Sale Now

Adults	\$25 before Oct 15
	\$27 before Oct 29
	\$30 at the door
Children	\$18 before Oct 29
Under 18	\$20 at the door
	<i>plus \$1 handling fee for online reservations</i>

*Underwriting
and
Sponsorship
Opportunities
Available*

For More Information

<http://www.tasnorthridge-motas.org/activities/sherman>



Temple Ahavat Shalom
18200 Rinaldi Place • Northridge CA 91324
818-360-2258 • www.tasnorthridge.org

SPOTLIGHT ON SISTERHOOD

MARK YOUR CALENDAR!

Thursday, Sept. 15	Muslim Women Speak! (Sisterhood meeting)
Sunday, Oct. 23	Ballot Proposition presentation
Thursday, Oct. 20	Sukkot meeting (away)
Saturday, Oct. 29	Allan Sherman Performance
Thursday, Nov. 3 – Sunday, Nov. 6	WRJ-PD Convention (Las Vegas, CA)
Sunday, Nov. 13	Paid-up Luncheon
Sunday, Nov. 20	Holiday Boutique
Sunday, Dec. 4	Mah Jongg Tournament
Sunday, Jan. 22	Pala Casino trip (Pala Casino)

MUSLIM WOMEN SPEAK!

We are going to start the 2016-2017 year on **Thursday, September 15** with a timely topic – Muslim Women Speak! In this highly interactive salon, we will hear the stories of four remarkable women. They will share their struggles and strengths and call us to a new awareness of why Americans must say NO to the politics of fear and hate. You don't have to be a Sisterhood member to come hear these women's experiences and what they have to teach us.

The four speakers are **Ferial Masry**, born in Mecca and mother of a U.S. soldier. **Soraya Deen**, the Founder of the Muslim Women Speakers Movement, **Philippa Sklaar**, born in South Africa, Jewish, and an author and **Edina Lekovic**, a consultant for Policy & Programming at the Muslim Public Affairs Council. For more details on the speakers, see the flyer in the Menorah.

This event will begin at 7:00 p.m. in the Social Hall (with snacks, as usual!) There is a \$5.00 charge to help cover the honorarium given to the speakers and the food, but it is waived for Sisterhood members and Friends of Sisterhood (see next article about joining Sisterhood or becoming a Friend of Sisterhood.)

SISTERHOOD MEMBERSHIP/FRIENDS OF SISTERHOOD

Thanks to all who already joined Sisterhood or become Friends of Sisterhood. Even if you never come to meetings, as long as you support what Sisterhood does for the Temple, such as providing Onegs, camperships, apples & honey and dreidles & gelt for our kids, financial support for the Temple, Religious School, ECEC and much more, it makes sense to become a member or a Friend of Sisterhood. Your support helps us to supply the services and financial aid we love to provide to the Temple.

Membership dues are: Member \$45.00; Sponsor \$72.00; Patron \$118.00.

Our bylaws state that all Sisterhood members must be Temple members in good standing and that only women are eligible to join. Sisterhood has a brand-new program called Friends of Sisterhood. Anyone who is not eligible for Membership, i.e., men and non-Temple members, who contributes to Sisterhood an amount equal to the Sisterhood dues is designated a "Friend of Sisterhood" and will be able to attend Sisterhood events (including the paid-up lunch) at the same price as a Sisterhood member. For monthly meetings and the paid-up lunch, that "price" is FREE!

Someone who is a "Friend of Sisterhood" is not a member of Sisterhood, and consequently would not be able to vote in Sisterhood elections, hold an elected office or chair a committee.

Our "Friends of Sisterhood" program allows male Temple members and others in the community who support Sisterhood to show their support by becoming our Friend. It means husbands of Sisterhood members can become our Friends and can join their wives at our programs without paying the \$5 fee. It means we are a more inclusive and welcoming organization.

We encourage all Temple members to show their support of everything Sisterhood does by becoming either

... CONTINUED ON PAGE 9

members or Friends of Sisterhood. And encourage your family and friends, who might be members of other Temples, or unaffiliated, to show their support of Sisterhood by becoming our Friend as well.

BALLOT PROPOSITION PRESENTATION



With all the hype about the presidential candidates, it is easy to forget that there are a long list of propositions on the ballot as well.

As of June 30, 17 propositions had earned a spot on the November ballot. Six of the 17 propositions seek to amend the state constitution. They include Brown's effort to revamp the rules on parole from state prison, and a requirement that neither house of the Legislature pass any bill that hasn't been available for public review for at least three days.

Nine measures will ask voters to enact new state laws, with proposals on everything from new background checks for buying ammunition to a \$9-billion bond for school construction and modernization projects. Voters will consider, too, the merits of an effort to impose a cap on prescription drug prices paid by state healthcare officials that will be fought with an expensive opposition campaign by the pharmaceutical industry.

The ballot also includes a referendum — voters will choose to accept or reject a law that bans single-use plastic bags statewide. That law was signed by Brown in 2014 and will take effect only if voters cast a “yes” vote on the referendum.

While some of the issues seem relatively simple on the surface, others will likely require voters to take a much deeper look. To help you make an educated decision on the propositions, Sisterhood has invited our own Fran Lapides, a member of the League of Women Voters, to come speak to us and help clarify these many and confusing ballot measures.

Please join us in the Social Hall on **Sunday, October 23** at 9:00 a.m. for this very informative presentation.

A light breakfast will be served. Free to Sisterhood members and Friends of Sisterhood, \$5 for guests.

SUKKOT CELEBRATION



Our annual Sukkot celebration will be on **Thursday, October 20** at 7:00 p.m., at the lovely home of Jo Schwartz. It will be a relaxed and festive event featuring

Cantor Ken Cohen. This is a great opportunity to get to know our new cantor. RSVP by October 13 to Kathy Barker at kathy@chipsandbits.com or (818) 974-1070. Directions to Jo's home will be provided when you RSVP. A-L please bring a dessert, and M-Z please bring an appetizer. This event is free to members and \$5 for non-members.

HONEY

Because Rosh Hashanah is so late this year you can still order **Honey wishes for the clergy** for only \$5 a wish. Show your appreciation for our clergy and staff by participating in the jar of honey they receive for Rosh Hashanah! You can also order Honey to be shipped to friends and family for \$11+\$4 shipping / jar. See the form in the Menorah or on the Temple website. Contact Dina Garcia at smilindina@gmail.com or Jackie Zev at (818) 832-9099 for more information.



LULAV AND ETROG



You can also still order Lulav and Etrog for Sukkot through Sisterhood. Last day to order is **Sunday, October 9**. Lulav and Etrog sets range from \$45 for a children's set to \$80 for a Superior set. Contact Jennifer

... CONTINUED ON PAGE 10

Kosoy at (818) 831-8781 or jmkosoy@gmail.com for more information. Forms are available in the Menorah or on the Temple website.

THE SONGS OF ALLAN SHERMAN



Our first fundraising event will be a joint event with MoTAS which will be fun for the whole family. On Saturday, October 29, Linden Waddell will perform “Hello Again, the Songs of Allan Sherman.” Allan

Sherman was an American comedy writer and television producer who became famous as a song parodist in the early 1960s. You’ve probably heard his immortal “Hello Mudduh, Hello Fadduh.” Linden Waddell provides a hilarious, warm, nostalgic look into the comic genius of Allan Sherman and his parody lyrics.

Pricing is \$25 for adults (until October 15) \$18 for children under 18 (until October 29). Sponsorship opportunities are available.

For more information, including online ticketing, visit <http://www.tasnorthridge-motas.org/activities/sherman/>.

Ticketing will be opened to the general public on September 15. To ensure your ticket, purchase it as soon as possible.

FUNDRAISERS IN NOVEMBER, DECEMBER AND JANUARY

Of course, we will have our ever popular **Holiday Boutique**, which this year is on Sunday, November 20. We are once again coupling it with a Goodwill Truck Drive. If you have clothing or bedding donations (stop storing those old sheets and quilts!) you can bring them to the Temple on November 20. Or, if you want the donation out of your house before the 20th, contact Jennifer Kosoy at (818) 831-8781 or jmkosoy@gmail.com and make arrangements for us to obtain your donation.

Do you MAJ? Our first **Mah Jongg tournament** of the year will be on **Sunday, December 4**, and we have our ever-popular **Pala Casino trip** planned for Sunday, January 22. It’s not too early to RSVP for Pala – don’t delay, because once the bus is full, that’s it!



PLANS FOR THE COMING YEAR - CONVENTIONS



There are already more than a dozen women considering attending the Women of Reform Judaism - Pacific District convention in Las Vegas November 3-6. The convention will be fabulous, with WRJ President Blair

Marks as our special guest and Rabbi Joe Black as Scholar-in-residence & musician. We are working on getting a 15 passenger van and carpooling to convention. If you’ve never been to a WRJ convention, this would be a great time to start, because, well, LAS VEGAS! Call or email Jackie Zev, Sisterhood President, at (818) 832-9099 or tas.jackiez@gmail.com if you are considering attending.

The Fried Leadership conference will be March 3-5, 2017 in Charleston, SC, so if you can’t make Las Vegas and you want to deepen connections with other sisterhoods, leaders, and WRJ, then consider this conference.

CAMPERSHIPS



Did you have a child who attended a Jewish camp, or went on a trip to Israel this past year?

Did you know that every year our Sisterhood and the Men of TAS provide camperships to help support these activities? In order to receive a campership, your child must submit an application and volunteer five hours for Sisterhood or the Men of TAS prior to the March

... CONTINUED ON PAGE 11

deadline. Giving your child the experience of Jewish camp has been proven one of the best ways to ensure that they continue to live a Jewish life into adulthood, and we are here to support your efforts.

Contact Laura Silverman at laurasilver818@aol.com or (818) 895-1789 for more information.

WEDNESDAY NIGHT MAH JONGG



Don't know how to play? Want to learn? Come to our monthly Mah Jongg game. We play on the fourth Wednesday of every month at 6:15 p.m. at the Temple. We always have a teacher there to give lessons, but you can't learn if you don't show up! Every level of play is accommodated. Don't miss out. There is a \$5 donation to play. Contact Anita Hoch for more information at anitapearl47@gmail.com.

ONEG SPONSORSHIP

Is there an event, a person or a memory you would like to honor in a special way?

Are you celebrating a birthday or an anniversary? Have you experienced a career change, a graduation or a new home? Are there people in your life you want to pay special tribute to, or would you like to honor the memory of loved ones?



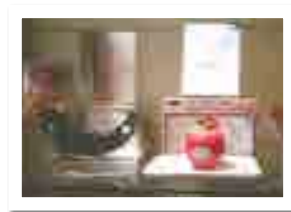
If you want to celebrate, to honor or to remember, please consider marking the occasion by sponsoring an Oneg Shabbat. We would like to share the time with you, hear the story behind the sponsorship and help you make the occasion a bit more special. In addition, your sponsorship will go a long way to support the work of the Sisterhood for our Temple, our youth and the Jewish community.

If you have questions or are interested in sponsoring an Oneg, please contact the Temple Office at: (818) 360-2258.

EXTENDED KIDDUSH

Has the cost of Bar/Bat Mitzvah receptions got you down? Sisterhood can provide a low cost luncheon after your child's Bar or Bat Mitzvah for your family and friends. This is not the big shebang with a DJ and dancing – it's a low key way to provide a nice meal after the service for your guests. Contact Sharon Janis at (818) 886-1295 if you are interested.

JUDAICA SHOP



Stop by the temple Judaica shop, brought to you by Sisterhood, and view our latest treasures! See our wonderful selection of holiday items to enhance your celebrations. Throughout the year we carry a versatile collection of Judaica – jewelry, tallits, kippahs, mezuzahs, yads, candleholders, yahrzeit memorials, cards for every occasion and more!

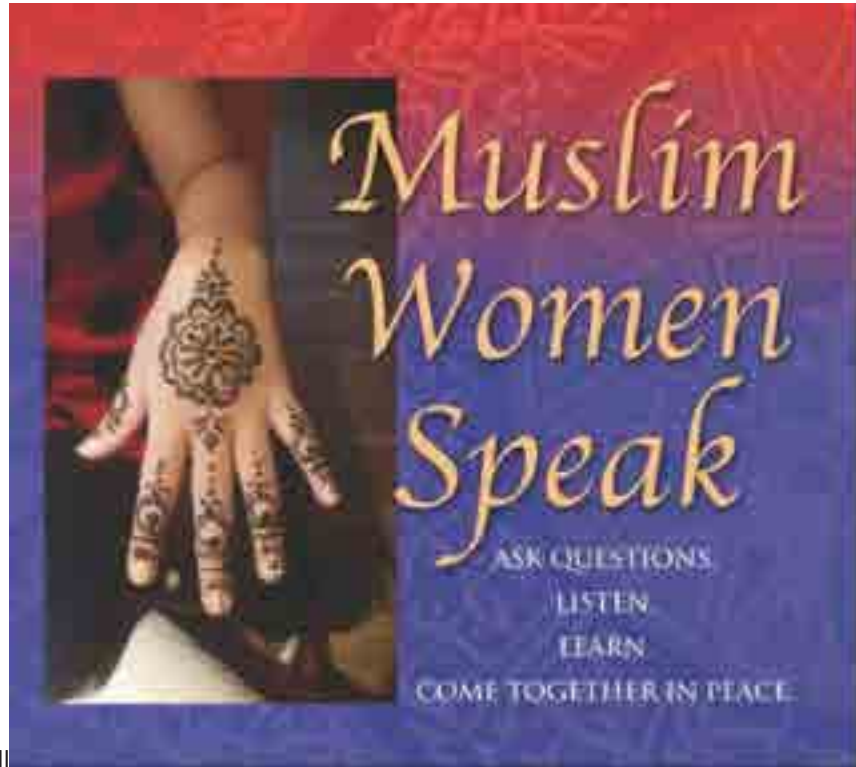
We are open during Shabbat evening onegs, on Sundays from 9:00 a.m. to 11:45 a.m. (when Sunday School is in session) and Wednesdays 10:00 a.m. - Noon.

**Special appointments?
With pleasure!**



Call Laraine Miller at (818) 993-0796 or Linda Sculler at (818) 701-7117. Credit cards, checks and cash accepted. Shop proceeds help fund the many Sisterhood projects and services provided to the temple.

... CONTINUED ON PAGE 12



Temple Ahavat Shalom Sisterhood

Is proud to invite you to

**AN AMERICAN RESPONSE TO RHETORIC
THAT PROMOTES BIGOTRY AND HATE**

THURSDAY, SEPTEMBER 15TH

7 PM

In the Social Hall

Members and Friends of Sisterhood: free of charge

Visitors: \$5.00 fee

Light refreshments will be served



MUSLIM WOMEN SPEAK....

"There comes a time when one must take a position that is neither safe, nor politic, nor popular, but he must take it because conscience tells him it is right." – Dr. King

In this highly interactive salon we will hear the stories of FOUR remarkable women. They will share their struggles and strengths and call us to a new awareness of why Americans must say NO to the politics of fear and hate.

IT IS INCUMBENT UPON EVERY ONE OF US TO:

- Call for a Moratorium On Muslim hate
- Acknowledge the social and professional contributions of American Muslims
- Establish dialogue with our political leaders.
- Look beyond enemy images
- Engage in communication that promotes harmony and ensures our nations wellbeing
- Why women must LEAD in social activism



Ferial Masry was born in Mecca, Saudi Arabia. In a spectacular 2004 write-in campaign, unprecedented in California, Masry garnered local, national and international attention for her outstanding achievement and her unique background. The mother of a U.S. soldier who served in Iraq, she has been an inspiration to people from all backgrounds as she pursues public office in California. Ferial Masry is an educator, an author, producer, and public speaker.



Soraya Deen MA is the Founder of the **Muslim Women Speakers Movement**. She is a lawyer and a sought after inspirational speaker. She is a member of the world famous motivational speaker Les Browns Platinum Group of Speakers. She is a Social and Spiritual Activist and has shared the stage with renowned motivational speakers and transformational leaders. She is the author of PEACE MATTERS: Raising Peace Conscious Children. She travels widely empowering individuals and corporations to promote connection through Compassionate Communication.



Philippa Sklaar is an author, survivor of abuse, speaker and advocate. She was born and raised in South Africa during Apartheid. Her father, the mayor of Johannesburg fought to eliminate racism in the mayoral chamber and as a result she was introduced to fighting injustice from a very young age. As a Jewish woman, she likens the bigotry and hate experienced by American Muslims similar to Apartheid. "When women have incredible power to change situations when they collaborate." She is the author of Hot Cuisine, and her clients include dignitaries such as Nelson Mandela and Elizabeth Taylor was her first client in LA. She also co-wrote, When Loving Him Hurts and The Affair.



Edina Lekovic is a consultant for Policy & Programming at the Muslim Public Affairs Council. She frequently acts as a national spokesperson for the American Muslim community to media outlets, government officials, interfaith leaders, academic institutions, and community organizations. She is one of the founders of Elev8, an arts-based youth program which has a mission to identify, train and develop youth community leadership rooted in awareness, responsibility, and action.

WHEN: Thursday September 15th 2016 TIME: 7.00 PM

WHERE: Temple Ahavat Shalom, 18200 Rinaldi Place, Northridge, CA 91326

HOSTED BY: TAS SISTERHOOD (\$5.00 Charge For nonmembers)

For DETAILS, contact Soraya Deen: 818 395 2032 OR Diane Levine levinedp@gmail.com





Erev Sukkot October 16, 2015



Lulav & Etrog Order Form

To order your own lulav and etrog for your Sukkot celebrations, please fill out the form below and return it to the Jennifer Kosoy along with a check (made out to TAS Sisterhood) by Sunday, October 9.

Your lulav and etrog will be available for pick-up at the Temple on Sunday, October 16 between 9:00 and 10:00.

Please order a Lulav & Etrog set for me:



Children's \$45.00 _____ Standard \$50.00 _____ Quality \$55.00 _____

Prime \$60.00 _____ Deluxe \$70.00 _____ Superior \$80.00 _____

Name: _____

Phone: _____

Email: _____

Please return this form and payment by Sunday October 9* to

Jennifer Kosoy
18552 Germain Street
Northridge, CA 91324

Any questions please call Jennifer Kosoy (818) 831-8781 or jmkosoy@gmail.com

*Please do not leave form at Temple after 11:00 on October 9. It will not get picked up.



Wish Your Family, Friends and Business Associates
A Sweet and Happy New Year
With an 8 oz. Gift Jar of Kosher Clover Honey

Believe it or not, the New Year is fast approaching! One of our wonderful traditions is to eat apples and honey on Rosh Hashanah. The apples symbolize the constant cycle of life and the honey symbolizes the sweetness that we hope will characterize the year to come. Once again Temple Ahavat Shalom Sisterhood is offering you the opportunity to share this tradition and make a donation to the Temple at the same time.

1. Send the clergy or member of our professional staff good wishes for a sweet and happy New Year for just \$5 a wish.

One honey jar will be sent to each clergy or professional staff member and your name will be listed on a greeting as a contributor of good wishes for a Sweet and Joyous New Year.

If every Temple Family sent wishes to our Clergy and Staff, we could easily earn upwards of \$12,000 for our Temple.

2. You can also send a jar of honey to friends & family within the US for just \$11.

Each \$11 jar is delivered with your **personal** wishes for a Sweet and Joyous New Year. (This cost is all-inclusive; packaging, shipping* and an eight-ounce jar of pure Kosher honey, straight from a farm in Kentucky.)

ORDERING IS SIMPLE. JUST FOLLOW THE FEW STEPS ON THE OTHER SIDE.

The DEADLINE to receive mail-in orders to TAS is July 22, 2016.*

Not much time to place an order! Please DO IT NOW!

*You can order up to two weeks before Rosh Hashanah but there will be a \$4.00 shipping charge added to each \$11 jar of honey after the July 22 deadline.



For questions or more information please contact Dina Garcia at smilindina@gmail.com or Jackie Zev at (818)832-9099



ORDERING INSTRUCTIONS:

STEP 1 Check off your choice of clergy and professional staff below to whom you wish to send sweet wishes for the New Year. **Your name as you want it to appear on their card.** _____

- Rabbi Barry Lutz Rabbi Shawna Brynjegard-Bialik Cantor Ken Cohen
 Cantor Emerita Patti Linsky Aaron Solomon, Executive Director
 Barb Gelb, Director of Lifelong Learning Tessa Cramer, ECEC Director
 Leanne Lansang Cindy Leshtz Sophia Redondo Cindy Spoon David Redondo

I have ordered _____ Honey Wish(es) @ \$5 each for a total of \$ _____.

If you are sending personal jars to friends or family, continue to STEP 2; otherwise, please make your check payable to Temple Ahavat Shalom Sisterhood or give us your credit card information (see below) and turn the form (and check if applicable) into the Temple office or mail to:

Dina Garcia, 9930 Owensmouth Ave. #6, Chatsworth, CA 91311

STEP 2 To send a jar of honey @ \$11 each to friends, family, teachers, etc. please:

Complete this form with recipients' names and complete addresses. PLEASE PRINT CLEARLY. Send your check and this form to TAS Sisterhood Honey Wishes at the address above. (You may send one check for all honey wishes and honey jars ordered.) **Credit cards also accepted.** Just fill in information below.

The enclosed gift card will read: **"Wishing You a Healthy and Happy New Year"** (please choose your closing). **Example:** Check off "Love" box and sign "Grandma" (For more names, please include another sheet of paper.)

1. Name: _____ 2. Name: _____

Address: _____ Address: _____

City: _____ ST: _____ ZIP: _____ City: _____ ST: _____ ZIP: _____

Choose one: Love Fondly From No signature Choose one: Love Fondly From No signature

3. Name: _____ 4. Name: _____

Address: _____ Address: _____

City: _____ ST: _____ ZIP: _____ City: _____ ST: _____ ZIP: _____

Choose one: Love Fondly From No signature Choose one: Love Fondly From No signature

I am ordering _____ jars of honey @ \$11 each for \$ _____

Shipping \$4.00/jar \$ _____ (waived for orders received by July 22)

Total for \$5 orders from top of page \$ _____

Total order \$ _____

Please make your check payable to Temple Ahavat Shalom Sisterhood.

Name: _____

Address: _____ Zip Code _____

Email: _____ Phone: _____

Credit Card Number: _____ Exp. Date: _____



**TAS SISTERHOOD
INVITES YOU TO OUR
ANNUAL**



SUKKOT CELEBRATION

Thursday, October 20th

At the home of Jo Schwartz

(address will be provided upon RSVP confirmation)

Featuring Cantorial artist: Ken Cohen

Free to members and Friends of TAS Sisterhood

\$5 to Non-members

A-L please bring dessert

M-Z please bring an appetizer

RSVP by October 13th to

Kathy Barker at Kathy@chipsandbits.com





Men of
Temple Ahavat Shalom

28th Annual Men of TAS (MoTAS) Charity Golf Tournament

Monday, September 19, 2016

Calabasas Country Club ♦ Calabasas CA
4515 Park Entrada, Calabasas CA 91302

**On-Course Sponsorships ♦ TAS Calendar & Program Ads
Special Prizes ♦ Raffles ♦ Silent/Live Auction
Goodie Bags ♦ Contests ♦ Games ♦ Meals Included**

More Information ♦ Registration and Ad Forms
<http://golf.tasnorthridge-motas.org>

Questions? Contact Barry Mann
(818) 231-4856 or golf@tasnorthridge-motas.org



Temple Ahavat Shalom
18200 Rinaldi Place • Northridge CA 91326
www.tasnorthridge.org • www.tasnorthridge-motas.org
TAS/MoTAS is a 501(3)(c) organization ID# 95-6122711

On-Course Host





Men of Temple Ahavat Shalom

2016 MoTAS Charity Golf Tournament

Sign Up Form

Name: _____

Address: _____

City: _____ State: _____ Zip: _____

Email: _____ Phone: _____

Referred By: _____ ☑️ Mention your Men's Club/Brotherhood for "Brotherhood Benefits"!

May your photo be used in publicity shots: Yes No

Add you to our Golf Mailing List: Yes No

ENTRY RATES

_____ x Individual @ \$215 = _____

_____ x Foursome @ \$860 = _____

I want to play with/Foursome Members:

1. _____
2. _____
3. _____
4. _____

_____ x "Mulligan" Package @ \$60 = _____

_____ x Guest Dinners @ \$36 = _____

TOTAL ENTRY FEES

ADVERTISING IN TAS CALENDAR / PROGRAM

_____ x Supporter Name - 3 Lines @ \$18 = _____

_____ x Business Card Ad † @ \$36 = _____

_____ x Honor/Memorial Ad † @ \$36 = _____

_____ x Quarter Page Ad † ‡ @ \$72 = _____

_____ x Half Page Ad † ‡ @ \$140 = _____

_____ x Full Page Ad † ‡ @ \$250 = _____

_____ x † Add Color to Ad @ +10% = _____

_____ x ‡ Front or Back Cover @ +10% = _____
(subject to availability)

TOTAL ADVERTISING

TOTAL ENTRY FEES (from column 1)

TOTAL GOLF SPONSORSHIPS (from column 1)

** GRAND TOTAL **

GOLF SPONSORSHIPS

Icons indicate sponsorship package benefits ◆ Subject to Availability
All golf sponsorships include TAS Calendar/Program advertising

_____ x Tee Sponsor @ \$180 = _____
 ☒: Name ☒: Name/Link

_____ x "Pebble Beach" Sponsor @ \$350 = _____
 ☒: Card ☒: Name/Link

Putting Contest ◆ Golf Cart ◆

_____ x "TCP Sawgrass" Sponsor @ \$500 = _____
 ☒: Card ☒: Name/Link

Hole-in-One ◆ Drink Cart ◆

_____ x "Calabasas" Sponsor @ \$750 = _____
 ☒: ¼ ☒: Name/Link

Breakfast ◆ Pin Flag ◆

Practice Green Pin Flag ◆

_____ x Lunch Sponsor @ \$1,250 = _____
 ☒: ¼ ☒: Name/Link

_____ x Corporate Sponsor @ \$1,800 = _____
 ☒: ½ 4 I ☒: Logo/Name/Link

_____ x Silver Sponsor @ \$3,000 = _____
 ☒: Full 4 I ☒: Logo/Name/Link

_____ x Gold Sponsor @ \$6,000 = _____
 ☒: Full 8 I ☒: Logo/Name/Link

_____ x Diamond Sponsor @ \$9,000 = _____
 ☒: Full 12 I ☒: Logo/Name/Link

TOTAL GOLF SPONSORSHIP

PAYMENT INFORMATION

Check payable to "TAS Mens Club/MoTAS"

Credit Card ➡ Visa Master Card Discover
Card# _____

Expires: _____ CVV: _____

Signature: _____

IMPORTANT NOTES

- Mail completed form to Mike Saltsman ◆ 11924 Nugent Drive ◆ Granada Hills CA 91344- 2236
- Ad copy due by 8 AM, Monday September 5, 2016 (or attach it to this form)
- Electronically submit ad copy to adbook@tasnorthridge-motas.org in Adobe Acrobat (.pdf), JPEG (.jpg) or other common graphic formats
- You will receive an email with more specifics once your form has been processed; additional information available at <http://golf.tasnorthridge-motas.org/>
- Sponsorship Benefits:

- | | |
|---|--|
| <input type="checkbox"/> I . Player Entries | <input type="checkbox"/> ☒ . Course Signage |
| <input type="checkbox"/> ☒ . Web Page | <input type="checkbox"/> ☒ . Program Advertising |



Men of Temple Ahavat Shalom

2016 FOOTBALL SQUARES



The Men of Temple Ahavat Shalom (MoTAS) announce the 2016 season of "Football Squares," the full-season version of the Super Bowl game many of you participate in. The earnings from this program (potentially as much as \$3,000) are used to support special Temple programs and needs; funding that is above and beyond money available from normal TAS budget allowances.

A brief reminder of how the game works:

1. There is a chart set up, numbers 0-9 across the top for the 'home team,' and 0-9 down the side, for the 'visiting team,' and the numbers are randomly arranged. There are 100 total squares on the board. The games are played over the 16 Monday Night Football games in Fall 2016 (the first Monday we're using the game closest to TAS). Your \$50 contribution gives you one square in the grid for all 16 weeks. As the grid numbers are randomly selected, it makes no difference where your square is. Additionally, each game will have a different randomly selected number arrangement for the home and visiting teams. Thus, it is rare that you will have the same set of two numbers for two different weeks.
2. Payouts are \$25 for a matching score for home and visitor (determined by the last digit of the score, so 17 is a 7) for each of the first, second, and third quarters. The final score earns \$50. You can win once, twice, or maybe all four times in any week.
3. Any adult is eligible to play. One entry per individual; a couple, each participating, can play two squares (for a \$100 contribution).

Official rules, an on-line signup form, and printable signup forms are on the MoTAS website at <http://squares.tasnorthridge-motas.org>.

Your support of this program is greatly appreciated. You might win some money, but the Temple is the big winner! A warm "Thank you" from the Men of TAS.

Men of Temple Ahavat Shalom 2016 Football Squares Sign Up Form		
Player Name: _____		× \$50 = _____
Player Name: _____		× \$50 = _____
Mailing Address: _____		TOTAL DUE: _____
City: _____ State: _____ Zip: _____		
Phone #: _____ Email: _____		
Payment Information: <input type="checkbox"/> Check payable to "TAS Mens Club MoTAS" Credit Card: <input type="checkbox"/> Visa <input type="checkbox"/> Mastercard <input type="checkbox"/> Discover Card Number: _____ Expiration: _____ CVV: _____ Signature: (below) Name on Card: _____		OFFICE USE ONLY Grid Square: _____ Check#: _____ Cash: _____ C/C: _____ IOU: _____ Amount: _____

Please fill in this form and drop off/mail to: Men of TAS Football Squares • Temple Ahavat Shalom
18200 Rinaldi Place • Northridge CA 91326



Men of Temple Ahavat Shalom

Dining Does Good

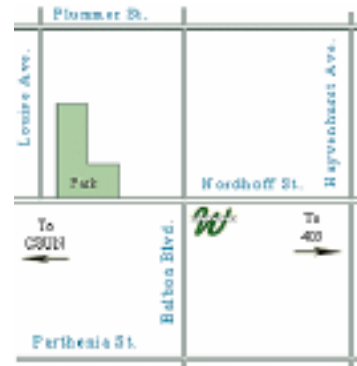


Weiler's Original Northridge Delicatessen

www.weilersdeli.com

- When: Monday, September 12, 2016
All Day – 6am until 9pm
- Where: Weiler's Original Northridge Delicatessen
9046 Balboa Boulevard
Northridge, CA 91325
- Benefitting: Men of Temple Ahavat Shalom *and*
TAS Infant Toddler Center

Dine at Weiler's anytime on our selected day, present this flyer when you pay, and Weiler's will donate back 15% to MoTAS, which will be split with our selected organization.



Dining Does Good is a program of MoTAS where we partner with a local restaurant to raise money for both MoTAS and a selected temple organization. When you dine out at our partner restaurant on the event day, the restaurant donates a percentage back to MoTAS, and MoTAS splits that donation 50/50 with our selected TAS organization.



The Men of Temple Ahavat Shalom (MoTAS) is an auxiliary of Temple Ahavat Shalom, 18200 Rinaldi Place, Northridge, CA 91326
MoTAS Website: www.tasnorthridge-motas.org TAS Website: www.tasnorthridge.org



ECEC

FROM THE DESK OF

Barb Gelb

Director of Lifelong Learning

The Value of Our TAS Early Childhood Community

Cost of having a baby...

Diapers: \$2000

Stroller: \$85

Car seats for both cars plus one for Grandma: \$225

Being part of a loving, nurturing infant-toddler center and preschool in a Temple community where you and your child will make lifelong friends:

PRICELESS

“I am so happy to be confirmed with my friends that I have known for 14 years since we started here at the TAS preschool.” We hear this, or some version of it, from several 11th grade Confirmants each year. They elaborate, talking about how their friends have been with them through thick and thin, supporting them, celebrating with them, growing up with them. They talk about how they could always be themselves at TAS and how they love coming here because it’s their second home. They talk about their deep love for their TAS community.

Their parents have also formed friendships with the same features. They too, support each other as they face the trials and tribulations of parenting, from potty training to college admissions. They often remain friends long after their children are at college and beyond. Through their TAS community, they too have been there for each other’s simchas and tragedies. They have spent years worshipping, celebrating and learning together. TAS is their second home as well.

When a family attends our TAS Infant-Toddler or Early Childhood Center, they receive membership into our wonderful TAS community. These families might not know or understand it now, but soon they will come to see just how valuable their new community is. Fourteen years will pass by faster than they can imagine, and the parents will be sitting with their dearest friends, watching their beautiful babies get confirmed. And I guarantee that some of them will say, “I am so happy to be confirmed with my friends that I have known since 2016 when I started at the brand new TAS Infant Toddler Center.”

If you are a family or know a family looking for excellent, nurturing, loving, developmental childcare please let them know about us. They will get all that and more here at TAS. For more information contact ECEC Director Tessa Cramer at [818\) 360.2258 ext. 303](tel:8183602258).



**AUGUST 19, 2016
SHABBABAQUE**



GENEROUS GIFTS

ANNUAL GIVING/ GENERAL FUND

Richard and Patricia Aidem
Stephen Friedlander
Bonnie and Allan Duboff in memory of Donald Doner

CARING COMMUNITY FUND

Shelly Trop to Judy Stehr sending wishes for a speedy recovery
Melinda Kough and Family in memory of Stanley Schway
Shelly and Phil Trop sending wishes to Howard Schnee for a speedy recovery
Fran Krimston in honor of Lynda Spector's very special birthday
Fran Krimston in honor of Andy Mann's retirement
Fran Krimston wishing Barry Mann a speedy recovery
Annette and Ken Held in honor of Noah Korduner
Annette and Ken Held in memory of Leslie Fischer
Sue and Paul Issler in honor of the wedding of Sheila Reback's granddaughter, Shira
Abbey Klein with love to the Krimston-Korduner Family in honor of Noah's Bar Mitzvah
Abbey Klein to the Fischer Family, in memory of your wife and mom, Leslie
Sherry and Irv Lucks to Joan Krimston and David Korduner in honor of Noah's Bar Mitzvah
Sherry and Irv Lucks to Fran Krimston in honor of Noah's Bar Mitzvah

EARLY CHILDHOOD FUND

Lynn and Michael Doner to Debbie and Scott Weiss, "Mazel Tov on the birth of Sadie Weiss"

MARISA INGRUM FUND-RESILIENCE OF THE SOUL

The Shearer Family in memory of Leon Kreida
The Shearer Family in memory of Margerite Shearer

RABBI'S DISCRETIONARY FUND

Ellen, Bruce, Stephen and Tali Gurnick to Rabbi Lutz, "Thank you for all your time, patience and help."
Melinda Kough and Family to Rabbi Shawna, "Thank you for leading the Shivah Minyan for Stanley Schway."
Brian and Cheryl Hatkoff to Rabbi Shawna, "Thank you for your good words."

SARITZKY FAMILY ADULT EDUCATION FUND

Andy and Barry Mann to Lynda Spector, "Mazel Tov on your special Birthday."

VI AND DAVID LIEBER MEMORIAL MUSIC FUND

Fran Krimston to Cantor Ken Cohen, Rabbi Barry Lutz and Aaron Solomon, "For your part in making Noah Korduner's Bar Mitzvah a complete joy."
Fran Krimston to Buddy and Ellie Bregman, "Welcome home!"
Fran Krimston to Elaine Gottesman, "Sending wishes for a speedy recovery."
Marian and Bill Schiff in memory of Monte Krimston
Abbey Klein with love to Fran Krimston in honor of Noah's Bar Mitzvah

YAHARZEITS

Rick, Alaine and Karen Seidman in memory of Adel Seidman
Sheila Reback in memory of Gertrude R. Glass
Max and Ruth Lupul in memory of Dr. Heinrich Lupul
Max and Ruth Lupul in memory of Herta Lupul
Cathy Meyers in memory of Jeanne Jamison
Cathy Meyers in memory of Dorothy Zelden
Eunice Horwitz in memory of Dora Prinz Horwitz
David and Laurie Scher in memory of Michael Scher
David and Laurie Scher in memory of Sylvia Brodtkin
David and Laurie Scher in memory of Jeffrey Daniels
Bryan and Myrna Davis in memory of Louis Rapoport
Richard and Bernice Burns in memory of Florence Burns
Shirlee Kline in memory of Bruce Brown
Eva-Lynn Diesenhaus in memory of Sidney Diesenhaus
Bob Brostoff and Judy Stehr in memory of Helen Albert
Allan and Pamala Evenas in memory of Zofia Evenas
Bruce and Terry Hatkoff in memory of Alfred Stark
Nick and Rosie Mandel in memory of Victoria Yomtowitz
Diane Levine in memory of Goldie Chirlin
Diane Levine in memory of Sara Seiden
Mark and Briget Miller in memory of Maxine Miller
Roseanna and Steven Sculler in memory of Jean Shanman
Charles Padow in memory of Eugene Padow

Aaron and Lisa Labowitz in memory of Charles Aaron
David and Becky Breuer in memory of Eugene Breuer
David and Becky Breuer in memory of Dr. Yan Isado Grebler
Linda and Joe Sculler in memory of Sol Eisenman
Linda and Joe Sculler in memory of Herman Eisenman
Anita Hoch in memory of Miriam Kleinbrodt
Karen and Gordon Silverstein in memory of Hilda Dienstag
Rick, Alaine and Karen Seidman in memory of Irving Seidman
Marian Rosen in memory of William Rosenberg
Leslie Sperber Reid in memory of Stuart Sperber
David and Laurie Scher in memory of Marti Daniels
Phyllis and Hal Bass in memory of Rose Appell
Eunice Horwitz in memory of Frieda Kagan
Janna Bronechter in memory of David Broneshter

*Thank you all for your
generous donations!*

RENTING AND SELLING NEW YORK CITY

As a licensed associate real estate broker in NYC, and former TAS member, I've had the privilege of helping TAS members and their friends and family to rent, buy, sell and invest in real estate in New York City.

Here's what my clients are saying:

As a parent of a child going to college in New York, and not being able to see things for myself, it was comforting to know that Karen Stone could be my eyes and offer endless solutions and options to where our son would live. Karen's knowledge of New York, coupled with her intelligence for knowing the right questions to ask on the renter's behalf put my mind at ease. Her team is amazing, her ability to consider the best options, and her quick responses were exactly what was needed at a time of feeling helpless. I strongly recommend Karen Stone for your real estate needs, in any way. If she doesn't have the answers herself, she will go out of her way to find them for you and put your mind at ease.

~Cantor Emerita Patti Linsky

KAREN J STONE



Licensed Associate Real Estate Broker

TOWN 79TH STREET, LLC

C: 917.858.1261

O: 646.532.4905

E: kstone@townresidential.com

karenstonenycspaces.com

TOWN
RESIDENTIAL

townresidential.com



Town Residential LLC ("Town") is a licensed real estate broker and a partnership of Buttonwood Residential Brokerage, LLC and Thor Equities, LLC. Town 79th Street, LLC is a licensed real estate broker and a subsidiary of TOWN. Equal Opportunity Housing.

ATTENTION TAS PHOTO LOVERS!

WE WELCOME PHOTOS FOR USE ON OUR WEBSITE,
THE MENORAH AND OUR ARCHIVES.

IF YOU TAKE PHOTOS AT TEMPLE EVENTS,

PLEASE SELECT A FEW OF THE BEST AND SEND
THEM TO TASPHOTO18@GMAIL.COM.

SEND YOUR BEST AND HAVE FUN!





Video Services Un-Limited



Keeping your memories special for a Lifetime

"Remember, You can't hear it or relive it in a Photograph."



Visit us at our website www.videoyou.com
or Visit our studio



Weddings

10727 White Oak Ave. Suite 101
Granada Hills, CA 91344
818-727-7746

We convert your old videos to DVD



Bar/Bat Mitzvahs

YOUR FAMILY IS PRECIOUS TO YOU

Plan ahead with a gift of love for
those you care about most.

Doreen Kayne

Temple Ahavat Shalom's Advance Planning Representative

800-600-0076 ext.413 | dkayne@mountsinaiparks.org



MEMORIAL PARKS AND MORTUARIES

Simi Valley FD 1745 6150 Mount Sinai Drive, Simi Valley CA 93063
Hollywood Hills FD 1010 5950 Forest Lawn Drive, Los Angeles CA 90068
www.mountsinaiparks.org 800-600-0076

SRG

SENIOR
LIVING



An experienced ally can truly make all the difference.

People who choose our communities want more than just a place to live. Much more. They want great social opportunities, fine dining, accredited care services, and someone who really understands. In other words, an ally. Come see how you can live your very best.

Please call to schedule your complimentary lunch and tour.

The
VILLAGE

AT NORTHRIDGE

INDEPENDENT & ASSISTED LIVING

9222 Corbin Avenue, Northridge, CA
SRGseniorliving.com • 818.732.6974



RCFE# 197608838

Condolences

Robert Schiff and Family on the death of his father,
Sigmund Schiff

Melinda Kough and Family on the death of her father,
Stanley Schway

Bernice Ponaman and Family on the death of her sister-in-
law, Doris Platlan

Michael Abramson and Family on the death of his mother,
Barbara Abramson

Caron Eisenberg and Family on the death of her husband,
Shelly Eisenberg

Geoffrey Fischer and Family on the death of his wife and our
Temple member, Leslie Fischer

*May their memory
be a blessing*

Congratulations to:

Joel Bower and Judy Guest are the proud grandparents of a
baby boy, Korbin Michael Robert Guest. The proud parents
are Kevin and Korina Guest.



TEMPLE AHAVAT SHALOM/HILLSIDE MEMORIAL PARK AND MORTUARY PRE-NEED PARTNERSHIP PROGRAM

Planning your funeral arrangements in advance with the help of a caring and professional Hillside Family Service Advisor is the perfect way to ensure your family is able to focus on what is truly important: The Memory of Your Life and Legacy. Our exclusive PRE-NEED PARTNERSHIP PROGRAM enables you to make all your arrangements in advance, giving your family peace of mind.

Temple Ahavat Shalom members will receive a Pre-Need Partnership Program savings on selected properties and special financing. In addition, each purchase will generate a \$500 per space donation to Temple Ahavat Shalom from Hillside. This program is offered to better serve the Jewish Community and to provide additional support for Temple Ahavat Shalom.

For more information call:

Rachel Lowenthal

Liaison to Temple Ahavat Shalom

310.641.0707 x 201

rlowenthal@hillside memorial.org



HILLSIDE ★

MEMORIAL PARK AND MORTUARY

Keeping Families Together

6001 W CENTINELA AVENUE
LOS ANGELES, CA 90045
310.641.0707 or 800.526.1094
HILLSIDEMEMORIAL.ORG

111324

SEPTEMBER 2016 AT TEMPLE AHAVAT SHALOM

Sunday	Monday	Tuesday	Wednesday	Thursday	Friday	Saturday
				1 4:00pm - Adult Hebrew 7:00pm - Sisterhood Board Meeting - Away 7:00pm - Synplex Meeting	2 7:30pm - Erev Shabbat Service	3
4	5 Labor Day - Temple and School Offices Closed	6 9:30am - Torah Study 6:00pm - Avodah/TA Meeting 7:00pm - Adult Volunteer Choir Rehearsal	7 4:00pm - Adult Hebrew Class 6:00pm - Senior Teacher Assistant Meeting 7:00pm - Membership Committee Meeting	8 4:00pm - Adult Hebrew Class 7:00pm - Book Group Meeting 7:00pm - Facilities Committee Meeting	9 6:45pm - Lay-led Torah Study 7:30pm - Erev Shabbat Service	10 9:00am - Shabbat Morning Yoga
11 9:00am - First Day of Religious School & Pancake Breakfast 3:30pm - Club 45 and Club 67 - Away	12	13 9:30am - Torah Study 7:00pm - Adult Volunteer Choir Rehearsal	14 4:00pm - Adult Hebrew Class 6:00pm - Hebrew School Orientation	15 4:00pm - Adult Hebrew 7:00pm - Sisterhood	16 6:30pm - Erev Shabbat Service 7:30pm - Chai Shabbat Celebration	17 9:00am - Shabbaton
18 8:45am - Men of TAS 10:00am - Adult Ed: Basic Judaism	19 8:00am - Men of TAS Golf Tournament - Calabasas Country Club 10:00am - Adult Judaica Art Class	20 9:30am - Torah Study 7:00pm - Adult Volunteer Choir Rehearsal	21 4:00pm - Adult Hebrew 6:00pm - High Holy Day Ambassador Training 7:15pm - TAS Board Meeting	22 4:00pm - Adult Hebrew 7:00pm - Social Action Meeting	23 6:45pm - Lay-led Torah Study 7:30pm - Erev Shabbat Service	24 9:00am - Shabbat Morning Yoga 7:00pm - Havdalah and S'lichot Service 8:15pm - Dessert and Group Discussion
25 10:00am - Adult Ed: Basic Judaism	26 10:00am - Adult Judaica Art Class	27 9:30am - Torah Study 7:00pm - Adult Volunteer Choir Rehearsal	28 4:00pm - Adult Hebrew 6:15pm - Sisterhood Monthly Mah Jongg 7:00pm - Budget and Finance Committee Meeting 7:30pm - ECEC Parent Board Meeting	29 4:00pm - Adult Hebrew	30 7:30pm - Erev Shabbat Service	

The Menorah is . . .

Published monthly by Temple Ahavat Shalom,

18200 Rinaldi Place
Northridge, CA 91326

Editor - Fran Krimston
frankrimston@gmail.com

Proofreader - Helene Kimmel
Proofreader - Leanne Lansang

Deadlines are the 15th of the preceding month.

**MENORAH REACHES MORE THAN
1,500 ADULTS EVERY MONTH.**

PLACE YOUR AD IN THE NEXT MENORAH!

Rates are: \$200 for a full page
\$100 for a half page
\$50 for a quarter page

Pay for a full year and get one month free.

Distribution is: 1,500 email, full color

**Email Aaron Solomon for information at:
asolomon@TASnorthridge.org**

Check us out!

